

Addendum to Vision Progress Assessment Report:

Demographic and Statistical Changes since
2000

Compiled by Envision Central Texas

July 2008

POPULATION

Central Texas continues to be one of the fastest growing regions in the country. Between 2000 and 2006, our region outpaced growth in Texas overall by nearly 8% and U.S. growth by nearly 15%. In fact, two of the (100) fastest growing counties in the U.S. (with populations over 10,000) since 2000 are Williamson (#13) and Hays (#20). This high growth rate can be seen in formerly slow-growing communities such as Hutto, which has had a 796% growth rate since 2000.

Population Change 1980-2006

	1980	1990	2000	2006	Percent Change 1990-2000	Percent Change 2000-2006
Austin MSA	585,051	846,227	1,249,763	1,513,565	47.7%	21.1%
Bastrop County	24,726	38,263	57,733	71,684	50.9%	24.2%
Caldwell County	23,637	26,392	32,194	36,720	22.0%	14.1%
Hays County	40,594	65,614	97,589	130,325	48.7%	33.5%
Travis County	419,573	576,407	812,280	921,006	40.9%	13.4%
Williamson County	76,521	139,551	249,967	353,830	79.1%	41.6%
United States	::::	::::	::::	::::	13.1%	6.4%

Source: U.S. Census Bureau

<http://www.census.gov/>

The data below is a snap-shot of the 2005-2006 statistics of the total amount of in-migration to our area and the top five migratory regions. Also shown below is the amount of out-migration and the top five receiving areas.

In/Out Migration Data

Austin-Round Rock MSA, 2005-2006

In-Migration	# of People	% of Population
	74,023	4.89%
Top Migratory Regions	# of People	
Harris, TX	4,894	
Bexar, TX	3,102	
Dallas, TX	2,373	
New Orleans, LA	1,908	
Los Angeles, CA	1,795	

Out-Migration	# of People	% of Population
	48,825	3.23%
Top Migratory Regions	# of People	
Harris, TX	3,702	
Bexar, TX	2,913	
Dallas, TX	1,877	
Tarrant, TX	1,359	
Bell, TX	1,237	

Source: Internal Revenue Service, Statistics of Income Division's County-to-County Migration Data

POPULATION (con't)

There are a number of future population projections for the region which account for a range of possible growth scenarios. One such projection is provided below, which represents the Capital Area Metropolitan Planning Organization's approved methodology for calculating the population forecasts in their 2035 Long Range Transportation Plan. The projections were calculated by rounding the average of the Texas State Data Center's (TSDC) Scenario 0.5 and Scenario 1.0. Other scenarios using different underlying assumptions are available on the TSDC website.

Population Projections

	2010	2020	2030	2040
Austin-Round Rock MSA	1,673,000	2,195,500	2,858,400	3,684,700
Bastrop County	84,600	123,700	179,500	258,700
Caldwell County	43,300	57,500	73,500	90,900
Hays County	154,800	228,100	319,400	426,400
Travis County	1,003,600	1,208,900	1,434,100	1,680,200
Williamson County	386,700	577,300	851,900	1,228,500

Sources: Texas State Data Center & Capital Area Metropolitan Planning Organization

<http://txsdc.utsa.edu/tpepp/2006projections>

<http://www.campotexas.org/>

AGE & GENDER

Central Texas is young relative to the nation overall, with 45% of our population currently falling in the peak working years (between the ages of 18-44), compared to 38% nationally. The median age in the region is four years younger than the national median (32.4 years vs. 36.4 years). However, the median age here has increased slightly since 2000, from 30.9 to 32.4 years.

Population by Age and Sex, Austin-Round Rock MSA 2006

Age	Male	Female	Total
0-17	196,169	186,325	382,494
18-24	90,641	85,330	175,971
25-44	267,827	237,692	505,519
45-64	165,849	163,892	329,741
65-74	28,448	32,860	61,308
75+	20,277	31,115	51,392
Total	769,211	737,214	1,506,425

Source: U.S. Census Bureau, 2006 American Community Survey

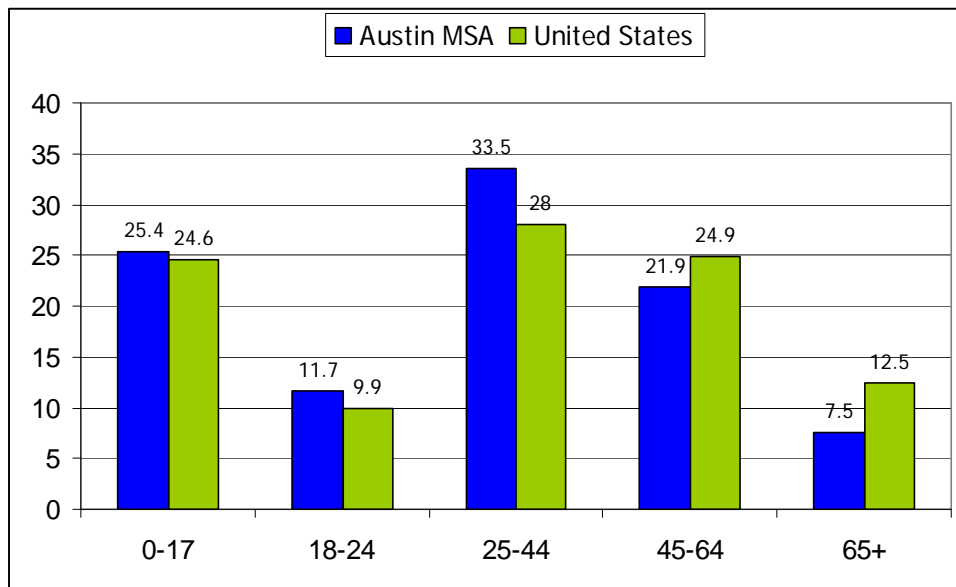
<http://www.census.gov/acs/www/>

Median Age By County, 2000-2006

	2000	2006
Austin-Round Rock MSA	30.9	32.4
Bastrop	35.4	37.3
Caldwell	34.4	:::
Hays	28.4	27.9
Travis	30.4	32
Williamson	32.3	33.6

Source: U.S. Census Bureau, 2006 American Community Survey

Population Distribution by Age, Austin-Round Rock MSA vs. U.S., 2006



Source: U.S. Census Bureau, 2006 American Community Survey

RACE/ETHNICITY

The diversity of our region's racial and ethnic makeup has also increased, with the percentage of the total population who identify their race or ethnicity as other than white growing by 5% between 2000 and 2006 (from 27% to 32%). The City of Austin is now a "majority-minority" city, meaning that no ethnic or demographic group exists as a majority of the city's population. In the region, the percentage of total population who identify themselves as White or Black/African American has declined, while the percentage of the population who identify themselves as being of Hispanic or Latino origin has increased from 28% to 32%.

Race/Ethnicity by County 2000 and 2006

		Total Population	White	Black or African American	Asian	All Other (not Hispanic)	Hispanic or Latino (of any race)
Bastrop County	2000	57,733	46,327	5,072	268	6,066	13,845
	2006	64,544	52,061	6,472	548	5,463	14,393
Caldwell County	2000	32,194	22,577	2,735	108	6,774	13,018
	2006	:::	:::	:::	:::	:::	:::
Hays County	2000	97589	77014	3588	772	16215	28859
	2006	130325	90427	5328	1602	32968	41344
Travis County	2000	812,280	554,058	75,247	36,286	146,689	229,048
	2006	921,006	572,442	79,081	50,548	218,935	299,239
Williamson County	2000	249,967	205,994	12,790	6,595	31,381	42,990
	2006	353,830	282,299	20,000	13,318	51,531	71,113

Source: U.S. Census Bureau, 2006 American Community Survey

Change in Race/Ethnicity for Austin-Round Rock MSA 2000-2006

	2000	% of total	2006	% of total
Total population	1,249,763		1,506,425	
Race				
One race	1,216,771	97.4%	1,471,015	97.6%
White	905,970	72.5%	1,019,172	67.7%
Black or African American	99,432	8.0%	113,915	7.6%
American Indian and Alaska Native	7,092	0.6%	7,097	0.5%
Asian	44,029	3.5%	66,064	4.4%
Native Hawaiian and Other Pacific Islander	870	0.0%	323	0.0%
Some other race	159,378	12.8%	264,444	17.6%
Two or more races	32,992	2.6%	35,410	2.4%

Source: U.S. Census Bureau, 2006 American Community Survey

Hispanic or Latino and Race

	2000	% of total	2006	% of total
Total population	1,249,763		1,506,425	
Hispanic or Latino (of any race)	327,760	26.2%	442,099	29.3%
Mexican	248,855	19.9%	351,030	23.3%
Puerto Rican	4,626	0.4%	5,286	0.4%
Cuban	2,032	0.2%	4,862	0.3%
Other Hispanic or Latino	72,247	5.8%	80,921	5.4%
Not Hispanic or Latino	922,003	73.8%	1,064,326	70.7%
White alone	758,302	60.7%	858,780	57.0%

Source: U.S. Census Bureau, 2006 American Community Survey

EDUCATION

Educational attainment levels in the region have improved between 2000 and 2006. The percentage of population 25 years and older who are high-school graduates went from 20% to 22%. A similar increase can be seen in the percentage of that group who has a bachelor's degree (24% to 26%). Those with a graduate or professional degree increased only slightly from 12% in 2000 to 13% in 2006.

Educational Attainment Austin-Round Rock MSA

	2000	2006	% in 2000	% in 2006
Population 25 years and over	768,147	947,960		
Less than 9th grade	55,048	66,883	7%	7%
9th to 12th grade, no diploma	61,753	62,537	8%	7%
High school graduate (includes equivalency)	152,632	207,802	20%	22%
Some college, no degree	175,118	187,783	23%	20%
Associate degree	41,774	54,844	5%	6%
Bachelor's degree	186,353	243,231	24%	26%
Graduate or professional degree	95,469	124,880	12%	13%

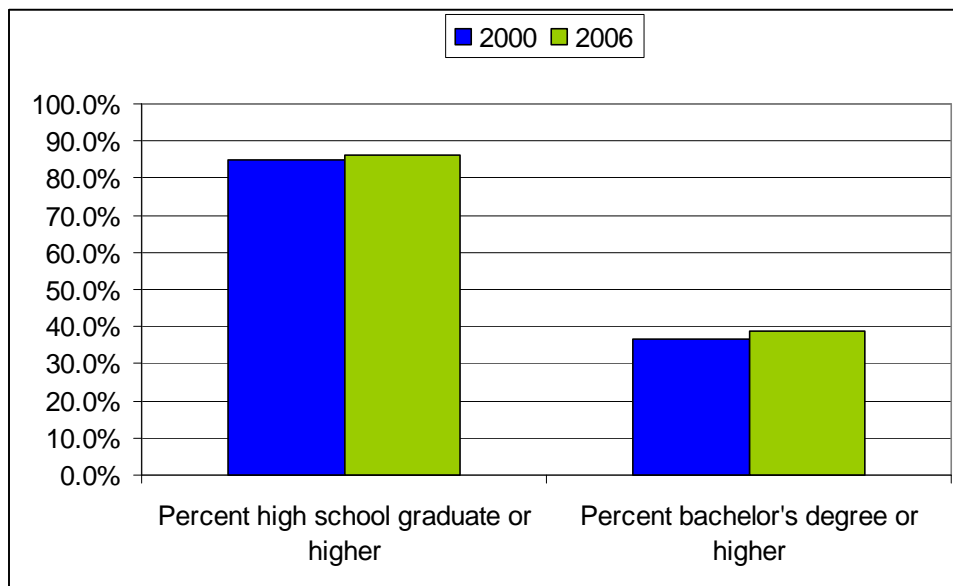
Source: U.S. Census Bureau, 2006 American Community Survey

School Enrollment, Austin-Round Rock MSA

	2000	% of Total	2006	% of Total
Population 3 years and over enrolled in school	365,233	100.0%	423,237	100.0%
Nursery school, preschool	23,817	6.5%	29,726	7.0%
Kindergarten	19,044	5.2%	19,080	4.5%
Elementary school (grades 1-8)	140,859	38.6%	165,284	39.1%
High school (grades 9-12)	63,680	17.4%	81,384	19.2%
College or graduate school	117,833	32.3%	127,763	30.2%

Source: U.S. Census Bureau, 2006 American Community Survey

Percentage of Population High School Graduate / Bachelor's Degree or Higher Austin Round-Rock MSA



Source: U.S. Census Bureau, 2006 American Community Survey

INCOME

Income levels in the region have increased between 2000 and 2006, with the median household income increasing from \$48,950 to \$52,882 and per capita income increasing from \$24,516 to \$27,918. The Austin MSA enjoys higher median household income and per capita income than both the rest of Texas and the U.S. overall. Unemployment rates have increased, however, between 2000 and 2006, going from an annual rate of 3.0 in 2000 to an annual rate of 4.2 in 2006. The percentage of families in poverty also increased from 6.7% to 8.3%.

Per Capita Income 2006 for Austin-Round Rock MSA

	Per Capita Income
Bastrop County	\$25,830
Caldwell County	\$23,659
Hays County	\$27,860
Travis County	\$39,781
Williamson County	\$33,691

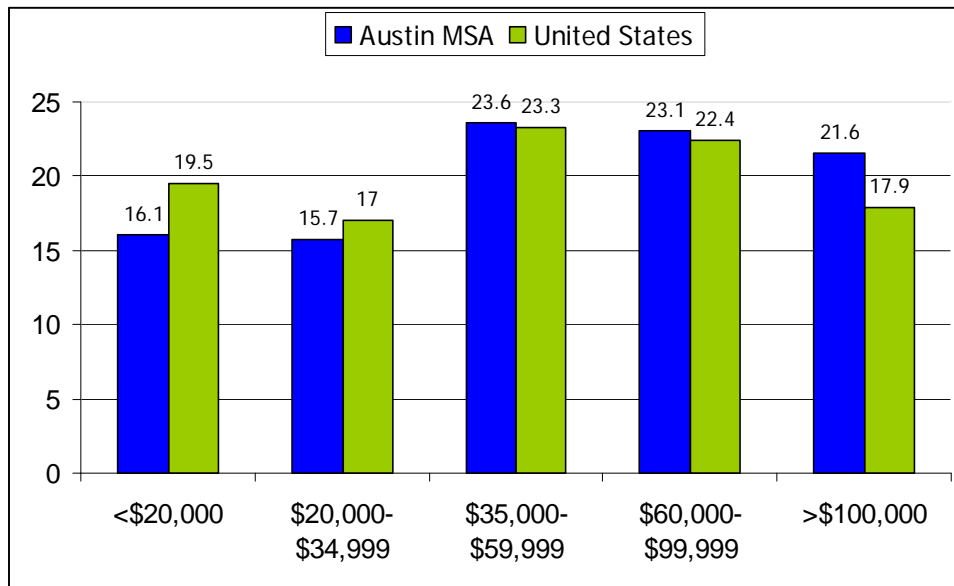
Source: U.S. Bureau of Economic Analysis
<http://www.bea.gov/regional/index.htm>

Income for Austin-Round Rock MSA, 2000 vs. 2006

	2000	2006
Median Household Income	\$48,950	\$52,882
Per Capita Income	\$24,516	\$27,918

Source: U.S. Census Bureau, 2006 American Community Survey

Households by Income Group, 2006



Source: U.S. Census Bureau, 2006 American Community Survey

% of families in Austin-Round Rock MSA whose income in the past 12 months is below poverty level

	1999	2006
All families	6.7%	8.3%
With related children under 18 years	9.4%	11.9%
With related children under 5 years	11.9%	10.3%

Source: U.S. Census Bureau, 2006 American Community Survey

EMPLOYMENT

Employment status and occupations have remained fairly consistent in the region over the last six years. As of January 2007, Central Texas enjoyed an unemployment rate that is lower than the national average of 4.6 and lower than the state average of 4.5.

Employment Status, Austin-Round Rock MSA

	2000	2006	% in 2000	% in 2006
Population 16 years and over	966,844	1,161,293		
In labor force	689,602	832,873	71%	72%
Civilian labor force	688,549	831,629	71%	72%
Employed	660,769	781,743	68%	67%
Unemployed	27,780	49,886	3%	4%
Armed Forces	1,053	1,244	0%	0%
Not in labor force	277,242	328,420	29%	28%

Source: U.S. Census Bureau, 2006 American Community Survey

Employment Summary for the Austin-Round Rock MSA, January 2007

not seasonally adjusted

	Labor Force	Employment	Unemployment	Unemployment Rate
Bastrop County	35,469	33,907	1,562	4.4
Caldwell County	16,812	16,043	769	4.6
Hays County	70,716	67,919	2,797	4
Travis County	528,937	508,981	19,956	3.8
Williamson County	189,044	181,845	7,199	3.8
Austin-Round Rock MSA	840,979	808,695	32,284	3.8
Texas	11,526,683	10,980,144	546,539	4.5

Source: Texas Workforce Commission

<http://www.tracer2.com/>

Occupations for Austin-Round Rock MSA

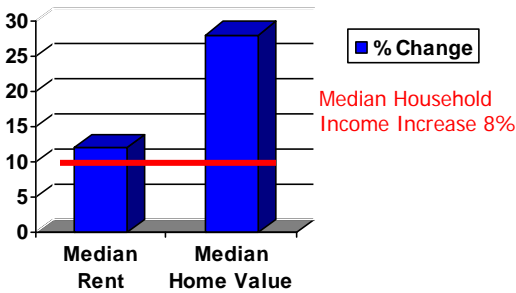
	2000	% of Total	2006	% of Total
Employed civilian population 16 years and over	660,769	100	781,743	100
OCCUPATION				
Management, professional, and related occupations	276,939	41.9%	317,687	40.6%
Service occupations	81,685	12.4%	120,605	15.4%
Sales and office occupations	176,445	26.7%	202,374	25.9%
Farming, fishing, and forestry occupations	1,618	0.2%	1,279	0.2%
Construction, extraction, and maintenance occupations	62,760	9.5%	82,733	10.6%
Production, transportation, and material moving occupations	61,322	9.3%	57,065	7.3%

Source: U.S. Census Bureau, 2006 American Community Survey

HOUSING

Increasing housing costs have become more of a problem for some Central Texans, with the median home value rising 28% between 2000 and 2006. As housing costs increase, maintaining the target of 30% of income expended toward housing has become more difficult. In 2006, nearly 30% of owner-occupied households in the region with mortgages were spending over 30% of income on housing, compared to just 19% in 2000. While the housing stock has grown in the region from 496,004 units in 2000 to 613,448 units in 2006, the type of homes available have remained predominantly one-unit detached. Of the 117,444 new units, 66% are one-unit detached. However, the second largest incremental increase is in the category of 10-19 units, with 17% of new units falling in this category.

Housing Cost Increases Outpace Incomes (2000-2006)



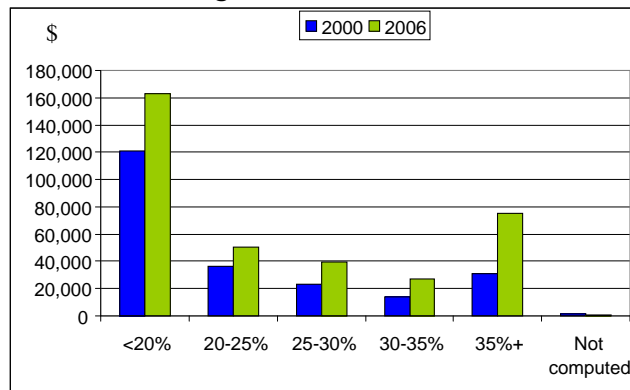
Source: U.S. Census Bureau, 2006 American Community Survey

Median Income, Rent, Home Value Comparison for Austin-Round Rock MSA

	2000	2006	% Change
Median Household Income	\$48,950	\$52,882	8%
Median Rent	\$721	\$807	12%
Median Home Value	\$128,100	\$164,100	28%

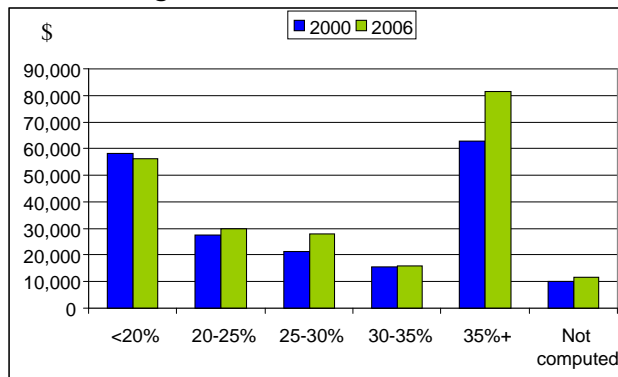
Source: U.S. Census Bureau, 2006 American Community Survey

Gross Owner Costs as a Percentage of Household Income, Austin-Round Rock MSA



Source: U.S. Census Bureau, 2006 American Community Survey

Gross Rent as a Percentage of Household Income, Austin-Round Rock MSA

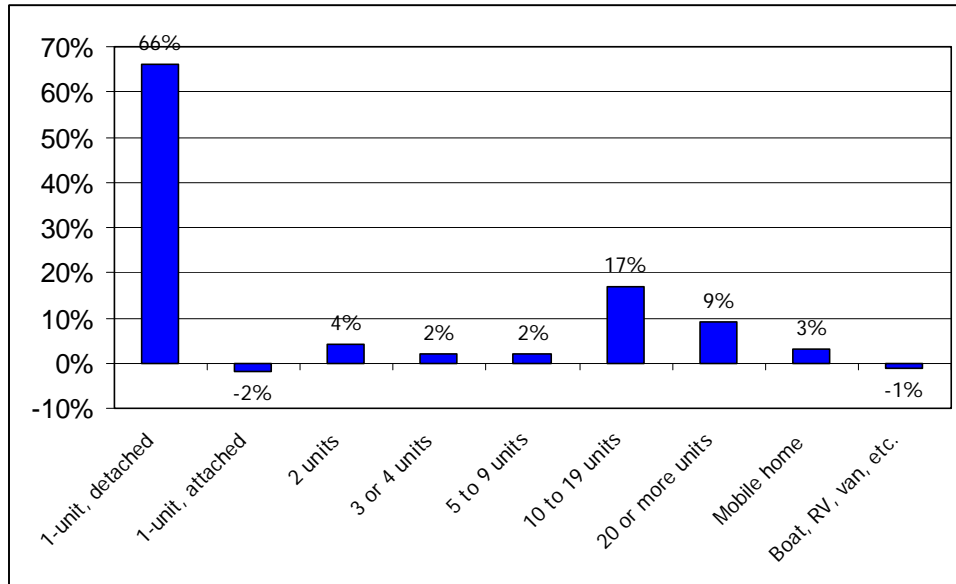


Source: U.S. Census Bureau, 2006 American Community Survey

HOUSING (con't)

Percent of Total New Housing Units by Type, Austin-Round Rock MSA, 2000-2006

117,444 new units in the Austin-Round Rock MSA between 2000 and 2006



Source: U.S. Census Bureau, 2006 American Community Survey

Median Home Value Comparison for the Austin-Round Rock MSA, 1990-2006

	1990	2000	2006	Change 1990-2000	Percent Change	Change 2000-2006	Percent Change
Austin-Round Rock MSA	\$76,800	\$128,100	\$164,100	\$51,300	67.0%	\$36,000	28.1%
Bastrop County	\$52,400	\$93,400	\$117,900	\$41,000	78.2%	\$24,500	26.2%
Caldwell County	\$43,800	\$68,000	:::	\$24,200	55.3%	:::	:::
Hays County	\$80,400	\$129,400	\$161,800	\$49,000	60.9%	\$32,400	25.0%
Travis County	\$77,700	\$134,700	\$173,200	\$57,000	73.4%	\$38,500	28.5%
Williamson County	\$72,100	\$125,800	\$160,400	\$53,700	74.5%	\$34,600	27.5%

Source: U.S. Census Bureau, 2006 American Community Survey

Median Gross Rent Comparison for the Austin-Round Rock MSA, 1990-2006

	1990	2000	2006	Change 1990-2000	Percent Change	Change 2000-2006	Percent Change
Austin-Round Rock MSA	\$418	\$721	\$807	\$303	72.4%	\$86	11.9%
Bastrop County	\$356	\$549	:::	\$193	54.2%	:::	:::
Caldwell County	\$303	\$472	:::	\$169	55.8%	:::	:::
Hays County	\$407	\$628	\$667	\$221	54.3%	\$39	6.2%
Travis County	\$415	\$727	\$803	\$312	75.2%	\$76	10.4%
Williamson County	\$443	\$787	\$901	\$344	77.7%	\$114	14.4%

Source: U.S. Census Bureau, 2006 American Community Survey

COMMUTING & TRAVEL TIME

Travel time to work stayed fairly consistent between 2000 and 2006, with the median travel time in minutes changing from 25.5 minutes to 25.3 minutes. Total vehicle miles traveled annually in the five-county MSA increased from 9,272,094,635 in 2000 to 10,226,179,085 in 2006. In the Austin urban area, the annual hours of delay per traveler during peak travel periods increased from 41 hrs in 2000 to 49 hours in 2005.

Commuting to Work for Austin-Round Rock MSA

	2000	2006	% in 2000	% in 2006
Workers 16 years and over	649,645	764,279		
Car, truck, or van -- drove alone	496,749	577,573	76%	76%
Car, truck, or van -- carpoled	89,113	99,387	14%	13%
Public transportation (including taxicab)	16,691	17,642	3%	2%
Walked	13,506	13,335	2%	2%
Other means	10,219	17,930	2%	2%
Worked at home	23,367	38,412	4%	5%
Mean travel time to work (minutes)	25.5	25.3		

Source: U.S. Census Bureau, 2006 American Community Survey

Total Vehicle Miles Traveled Annually, Austin-Round Rock MSA

	2000	2006	Increase	% Change
Austin-Round Rock MSA	9,272,094,635	10,226,179,085	954,084,450	10%
Bastrop County	625,533,715	702,228,975	76,695,260	12%
Caldwell County	295,767,165	345,975,470	50,208,305	17%
Hays County	1,103,391,715	1,217,642,555	114,250,840	10%
Travis County	5,259,455,090	5,777,902,550	518,447,460	10%
Williamson County	1,987,946,950	2,182,429,535	194,482,585	10%

Source: Texas Department of Transportation

LAND CONSERVED

Land conservation and increasing our region's parks, natural areas and green spaces has been a priority for many Central Texas communities. Since 2000, a number of large bond packages have been approved by voters.

November 2005	Travis County	\$62 million for parks and open space
November 2006	City of Austin	\$50 million for water quality lands and open space and \$20 million for parkland
November 2006	Williamson County	\$22 million for parkland
May 2007	Hays County	\$30 million for parks, open space, water quality and wildlife habitat preservation

Those shown above, and other bond funds passed before 2000, as well as funds from foundations, non-profits, the private sector and others sources, have been invested in numerous park and land conservation projects. Additional strategies, such as conservation easements, have been effective in adding even more land to the total acreage of conserved areas. While the following is not an exhaustive or complete listing of all of the conservation and parkland acquisition since 2000, it provides a sense of the kinds of acreage that has been conserved in the last eight years.

Bastrop County:

- Bastrop State Park – 3000 acres
- Colorado River Refuge – 360 acres
- Conservation Easements – 1100 acres
- Yegua Knobbs Preserve (Bastrop and Lee Counties) - 302 acres

Caldwell County:

- Conservation Easement – 215 acres
- Lockhart and Luling Parkland & Open Space – 232
- Plum Creek Park – 216 acres

Hays County:

- Blue Hole – 126 acres
- Purgatory Creek Preserve – 462 acres
- Spring Lake Preserve – 251 acres
- Water Quality Protection Lands*

Travis County:

- Balcones Canyonland Preserve Lands – 4982 acres
- East Metro Park – 260 acres
- Hogge Parkland Reserve – 569 acres
- Milton Reimers Ranch and Reimers Parkland Reserve – 1202 acres
- Pogue Springs Preserve – 591 acres
- Water Quality Protection Lands*

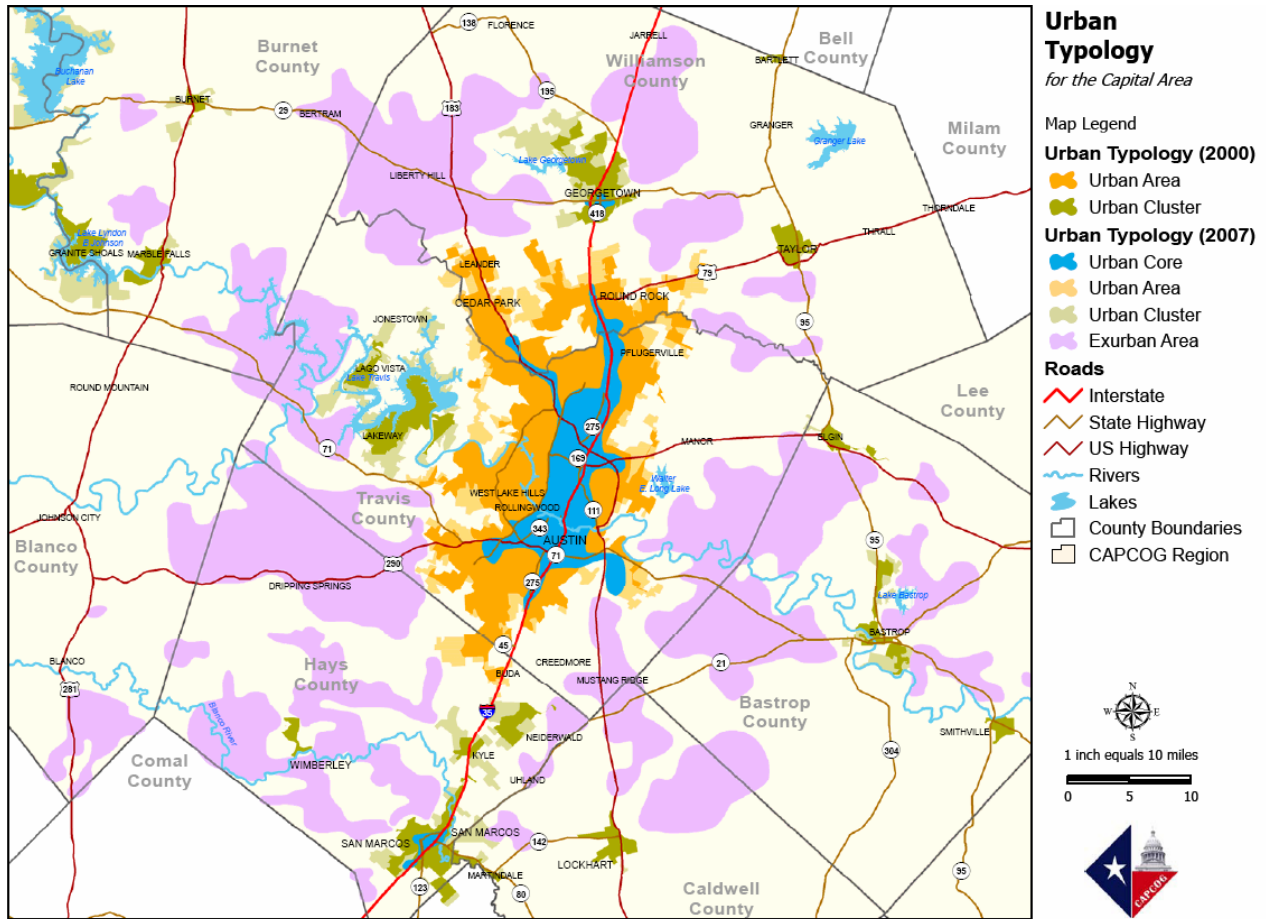
Williamson County:

- Berry Springs Park – 300 acres
- Lake Creek Trail (Byers tract) – 380 acres
- Southwest Williamson County Regional Park - 800 acres
- Twin Springs Preserve – 145 acres

* Water Quality Protection Lands secured since 2000 in Travis and Hays Counties – 10,434 acres. Includes properties such as Storm Ranch and Ragsdale Ranch.

LAND DEVELOPMENT PATTERN

The Capital Area Council of Governments developed the "Urban Typology" map below to illustrate the changes to land use pattern that occurred in the region since 2000. Using an April 2007 satellite image, March 2007 9-1-1 data, and the 2005 Vacant Land Inventory, and overlaying this information with Geographic Information System technology, they have provided a visual illustration for the land use changes in the region since 2000.



Metadata: 2007-06-29 Urban Typology produced on June 29, 2007. Urban Typology 2000 courtesy of US Census Bureau. Urban Typology (2007) based on 2007 Landsat Satellite Imagery. For additional info contact CAPCOG at (512) 916-6000.
 Disclaimer: The Capital Area Council of Governments (CAPCOG) provides this map and/or data 'as is' and assumes no liability for its accuracy or completeness. This is intended as a general representation only and is in no way intended to be used as survey grade information.

For more information, contact:

Envision Central Texas
 P.O. Box 17848
 Austin, TX 78760

512-916-6037
dmiller@envisioncentraltexas.org

Visit our website at www.envisioncentraltexas.org